

3D Intra Oral Scanne

3DS 2.0

Digital Implant / Orthodontics / Restoration
Make it easier for dental treatment



Our Strength

Our intraoral scanner has fast and easy image capturing technology, which can provide reliable, accurate complete data for digital dental impression. Providing patients with a comfortable and efficient treatment experience, our scanners make it easier for dentists to diagnose and communicate with patients. Our scanner is an open system scanner, which provides the access to the latest technology equipment available in the market. It has a range of applications which includes digital restoration, digital orthodontics, navigation template of implant, etc.



01 Fast Impression Taken

Fast scanning, linear scanning speed up to 80mm/s;
Full arch scanning speed up to 90s.

02 Humanized Scanner Tip Design

New smaller scanner tip, with internal heating system to keep constant temperature inside the patient mouth during scanning. The mirror angle of the scanning tip is close to 45 degrees, which can take into account the mesial and distal areas at the same time.

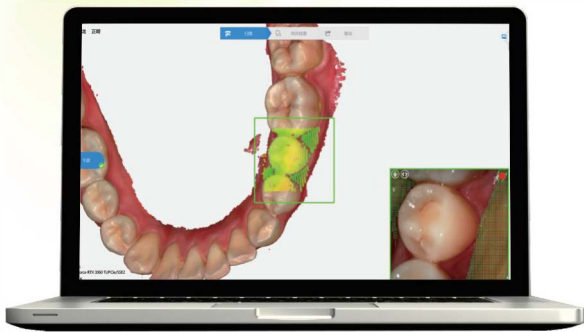
03 Screw Type Cable Connection

New screw type cable connection ensures a better connection between the cable and the handpiece.

04 Fashion and Light Handpiece Design

The overall appearance of the handpiece is with streamlined design, the net weight of the handpiece is 210g, and the hand-held design makes the operation much more convenient and simpler.

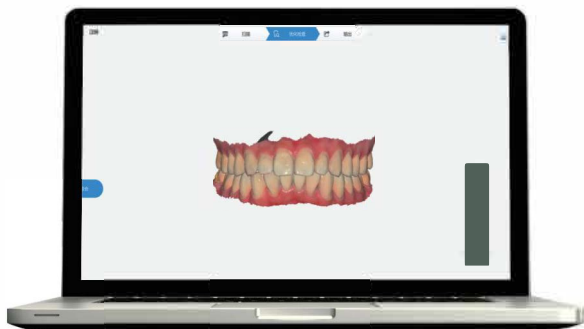




AI Scan

05 New AI Scanning Function

New AI function will remove extra softer tissues in real ensuring the smoother scanning operation and clean scanned results. It can be applied to edentulous jaw optimization, caries detection and automatic labeling,



3D Real Color

06 3D Real Color

The surface texture and contrast of the scanned mode stronger; the color distinction between teeth and soft t in the data is more obvious; the edges are clearer, whi helpful for doctors and technicians to do further proces

Intraoral Scanner Technical Specifications

Scanner Tip:

The mirror angle of the scanning tip is close to 45 degrees, which can take into account the mesial and distal areas at the same time.



Handpiece Size	240x49.5x30.5mm
Imaging Technology	Optical Continuous Video Capture
Scanning Distance	0-17mm
Accuracy	20um
Imaging Sync	3D
Quick Reset	Yes
Data Refine	Yes
Export Format	STL,PLY,OBJ
Handpiece Weight	210g
Service Life	>30000h

Basic Computer Configuration Required(Recommended):

- Microsoft Windows 10 64bit Pro edition or above
- Processor: Intel Core i7-9700H, 16GB or above
- Graphics Card: NVIDIA GeForce 1660, 6GB or above
Note: AMD Graphics may not support all software functions, which is not suggested.
- SSD: 256GB or 128GB + 1TB mechanical disk or above
- Port: USB 2.0/3.0
- Display Resolution: 1920x1080



Laptop Type

Device Operation Environment:

- Temperature: 10°C-40°C
- Relative Temperature: ≤85%
- Atmospheric Pressure: 86KPa-106KPa

Power Supply:

- Voltage: 100~240V, 50/60Hz
- Power: 25 VA

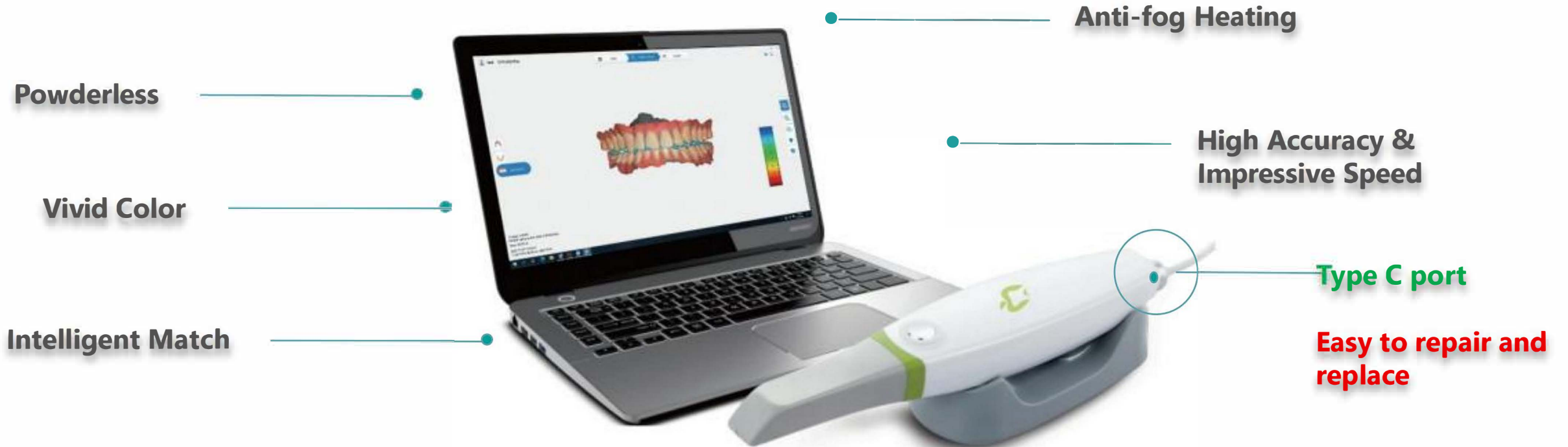
Device Storage Environment:

- Temperature:-20°C-55°C
- Relative Temperature:10%-93%
- Atmospheric Pressure: 86KPa-106KPa



Monitor Cart Type

Advantage of APPLIED 3D scanner



Intraoral scanner with high performance is suitable for restoration, implant, and orthodontics.

