

S T E R I L I Z A T I O N



**Ritter Autoclave Class B**  
**Clean Tec CB 23**  
**Clean Tec CB 18**

Made by Ritter Germany 

## CleanTec CB23 with LCD Display

Patented autolock system

The CleanTec CB23 is the ideal autoclave for all dental clinics that demand an effective and reliable autoclave with more space for instruments, thanks to the 23 liter chamber.



### Sterilizable products:

Solid instruments



Hollow instruments

Wrapped instruments

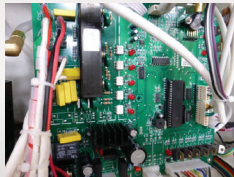
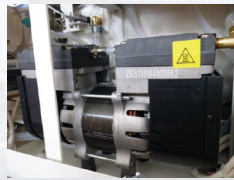


Porous loads



# S T E R I L I Z A T I O N

LCD-Display



## High-Quality Components & Reliability

The high performance pump has a very long lifespan and a 2-year warranty.

Also it guarantees a low operation noise level (<54 dBA in 1 m distance). The premium valves even come with a 4-year warranty.

The stainless steel tank is robust and easy to clean. Revised electronic components and software updates correspond to the latest standards.

Due to the high quality of the components, CleanTec CB23 requires only little maintenance.

**The CE-certified device is also available in an 18 liter version under the Name Clean Tec CB 18**

Including internal printer

Made by Ritter Germany

## Performance & Efficiency

CleanTec CB23 fully corresponds to the requirements of class B autoclaves. The high performance double stage vacuum pump creates a fractionated pre- and post vacuum, which guarantees efficient sterilization and drying processes. The optimum heat retention ensures a low level of energy consumption.

Also the CleanTec CB23 facilitates the quick availability of instruments and textiles after 23 minutes (unwrapped solid cycle) and only 13 minutes (quick cycles). The patented autolock door-system provides extra safety. CleanTec CB23 contains a built-in water storage tank and can optionally be connected to the demineralisation system and the drain.

## LCD display & integrated printer

The user-friendly, multi-language LCD display indicates temperature, pressure, time and cycle status. It allows an easy selection of the 13 different programmes. Any aviations or errors are shown in the display and are partially accompanied by an acoustic signal. CleanTec CB23 includes an internal printer for documentation. Also a USB 3.0 connection for easy data saving is integrated.

### Technical Specifications

Overall dimensions (L x H x D)	505 x 400 x 650 mm
Weight (with empty tanks)	50 kg
Weight (with full tanks)	55 kg
Weight per unit area of support:	Max. 32.46 N/cm <sup>2</sup>
Colour:	RAL9002
Material:	SUS304 Steel FeP01 Steel (Cover)
Noise level at 1 m distance:	54 dBA
Noise level in front of the display:	63 dBA
Max. transmitted heat	6.3 MJ/h (1506 kcal/h)

### Electrical specifications

Rated voltage:	230 V ~ 50/60 Hz
Rated input:	1750 W
Supply cable	(L 1.5 m) 2+1 x 1.5 mm <sup>2</sup>
Insulation	Fuses T6A Class I

### Chamber specifications

Max. working pressure:	0.21 MPa (relative)
Max. working vacuum:	-82 kPa (relative)
Max. vacuum (drying process):	-94 kPa (relative)
Max. working temperature:	137°C
Material:	Stainless steel SUS 304
Dimensions: ØxP	250 x 450 mm

### Clean water tank + Dirty water tank specifications

Max. capacity:	4.5 l
Cycles per tankful	~4
(before the min. level indicator lights up)	
Material:	Stainless steel

### Bacterial filter data

maximum diameter	56 mm
max. allowed filtering capacity	0.3 µm
No. of cycles before replacement	~150



Ritter Concept GmbH  
Freiburger Str. 45  
88400 Biberach, Germany

Fon 0049 7351 / 52 925-10  
Fax 0049 7351 / 52 925-11

info@ritterconcept.com  
www.ritterconcept.com

Your Ritter-Partner: